



epic
window
fashion



Manual Curtain Track System

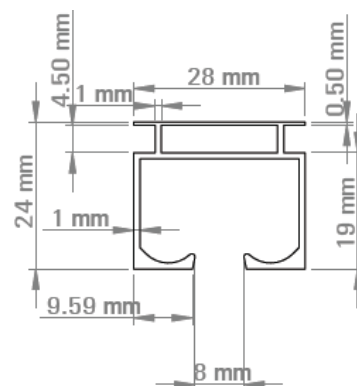
Manual Curtain Track System

FEATURES & SPECIFICATIONS

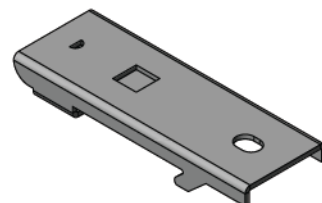
A solution to create function, simplicity to any interior.

Our manual curtain track system is a solution that's built and made for easy installation and stable performance. When installed, it functions well on each pull and is low maintenance.

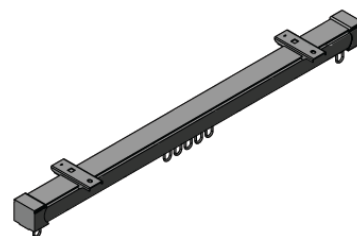
- ✓ Minimal design.
- ✓ Simple installation.
- ✓ Stable performance.
- ✓ Tracks can be bent for curved applications.
- ✓ Low maintenance.
- ✓ Supplied in 6m lengths or cut to specific size.
- ✓ Ivory as standard.



Aluminum Track

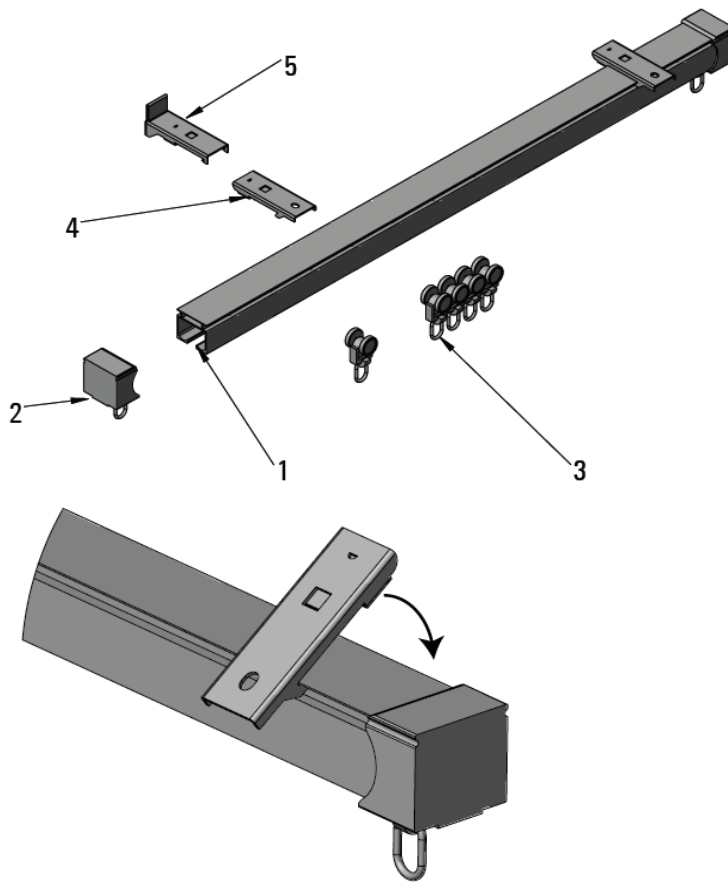


Ceiling Bracket

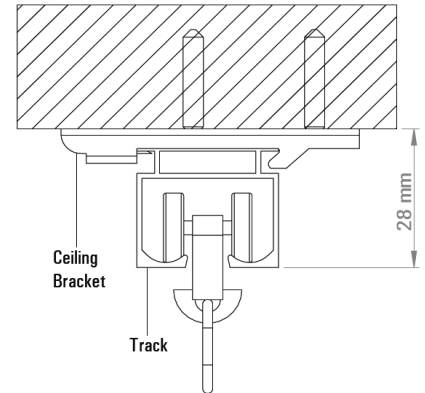


System Assembly

STANDARD PARTS



1. Curtain Track
2. End Caps
3. Runner
4. Ceiling Bracket
5. Wall Bracket



Specification Details

Product: Manual Curtain Track System

Supplier: Epic Window Fashion

Web: www.epicwindowfashion.com

Email: info@epicwindowfashion.com

Tel: +86 (0)769 8456 9578

Benefits: 1. Pre-cut to length or lengths for cutting at site. 2. Simple installation and stable performance. 3. Tracks can be bent for curved applications. 4. Cost-effective. 5. Low-maintenance.

Size Limitations: minimum 1000 mm to maximum 6000 mm.

Track: Extruded aluminum. 28 mm x 24mm x 1 mm thick. Ivory as standard.

Track Finish: Electrophoresis coating.

Control Type: Hand drawn.

Wand: 1000 mm, 1250 mm, 1520 mm.

Wand Color: Clear Acrylic. Surcharge applies.

Brackets: Color co-ordinated to suit track with PVC slick. Ceiling: 59 mm x 20.5 mm x 1 mm thick in steel. Wall: 59 mm x 20.5 mm x 1 mm in steel.

Runners: Color co-ordinated to suit track with stainless steel ring for hanging ceiling-to-floor curtains.

Runner/Track Ratio: 8 to 10 runners/m.

Mounting Options: Ceiling or wall mount.

Opening: One Way or Central Opening.

Track Ends: Fitted with plastic end caps in matching color to suit track.

Curtain Box Clearance: 100 mm for single drapery. 200 mm for dual drapery.